

EasyDMM Install Guide

1 Prior to Installation

1.1 Hardware requirement

- 1GHz or higher processor
- 200M or more hard disk space
- 1024x768 monitor resolution or above
- 256M or more RAM
- USB interface and cable
- LAN interface and cable

1.2 System Support

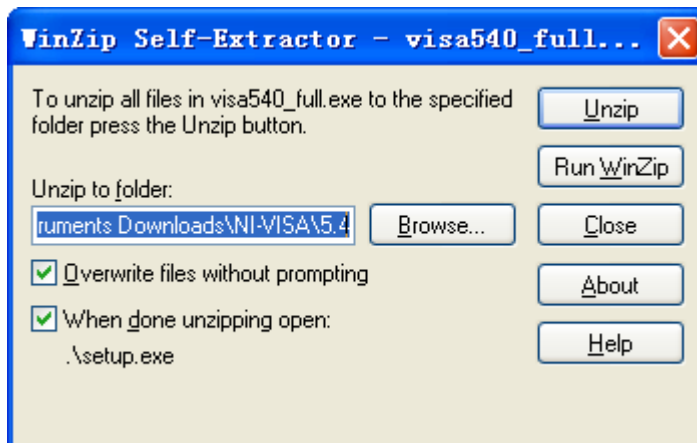
- Microsoft Windows 2000, XP system
- Win7 32bit and 64bit system
- Vista 32bit and 64bit system
- Windows 8 32bit and 64bit system.
- Windows 10 32bit and 64bit system.

1.3 Software requirement

NI-VISA:

Before installing the EasyDMM application, you have to install NI-VISA 5.4(This manual takes the NI-VISA5.4 as the example and you can install the latest version), which you can download from the [NI-VISA](http://www.ni.com/download/ni-visa-5.4/4230/en/) web site at: <http://www.ni.com/download/ni-visa-5.4/4230/en/>. After you download the file you can follow the steps below to install it:

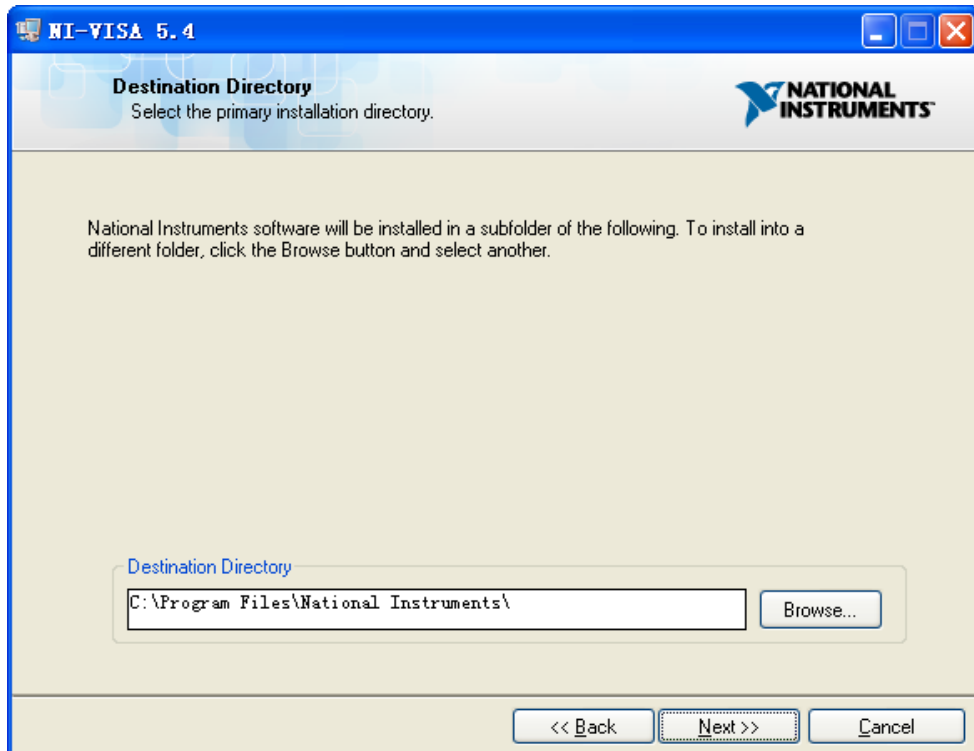
- a. Double click the visa540_full.exe, dialog shown as below:



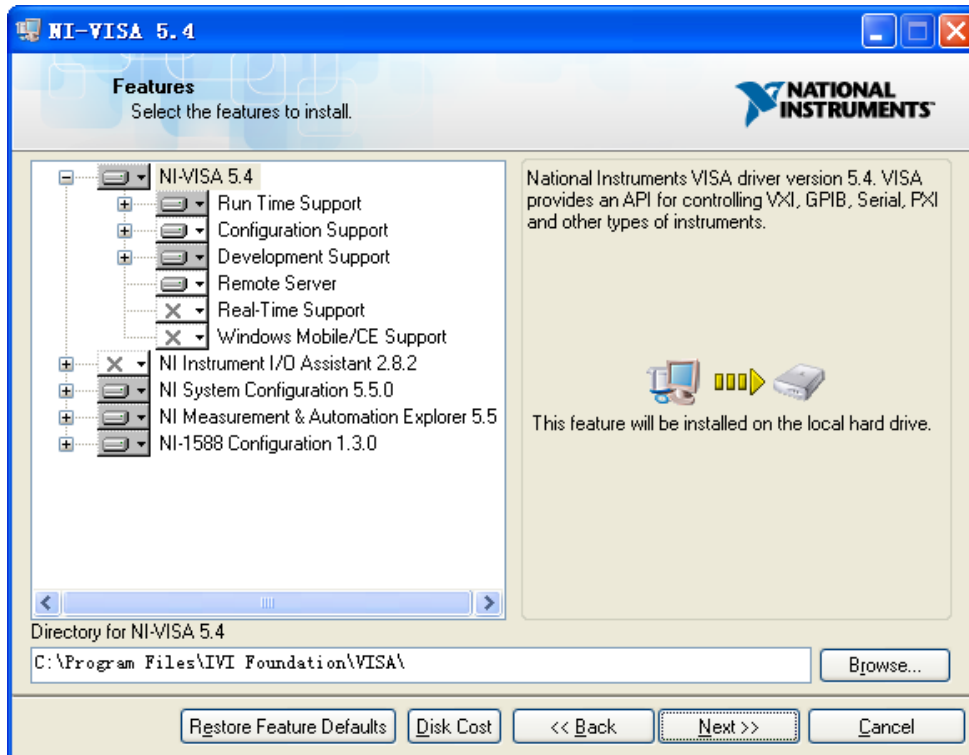
- b. Click Unzip, the install process will launch after unzipping files. If your computer needs to install .NET Framework 4, its Setup process will auto start.



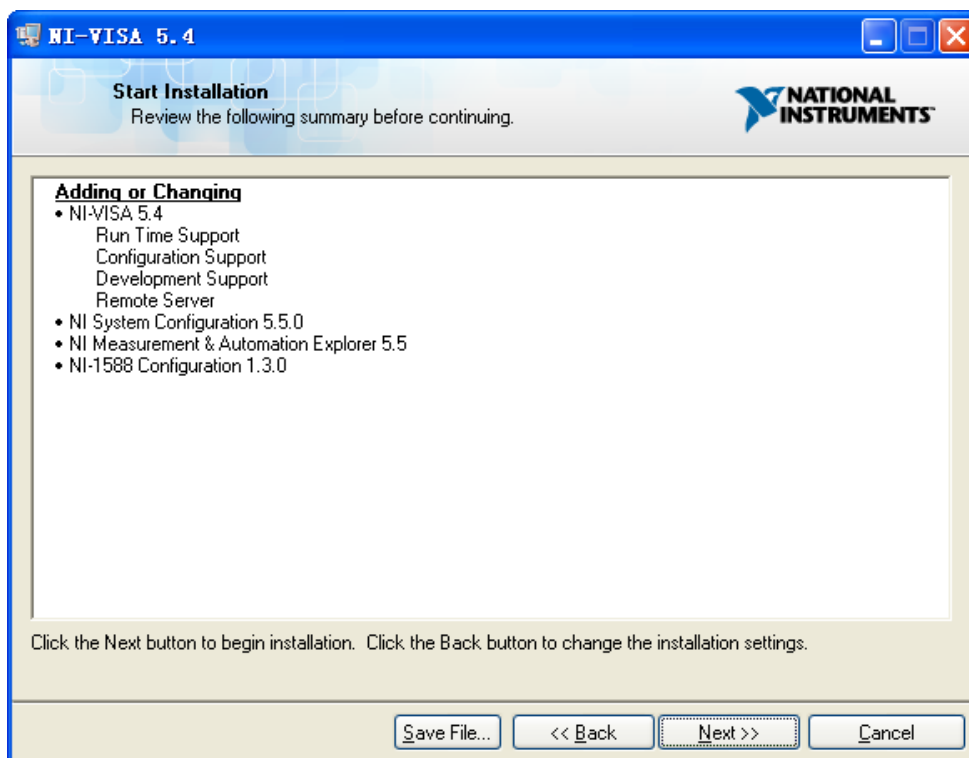
- c. The NI-VISA install dialog is shown above. Click Next to start the installation process.



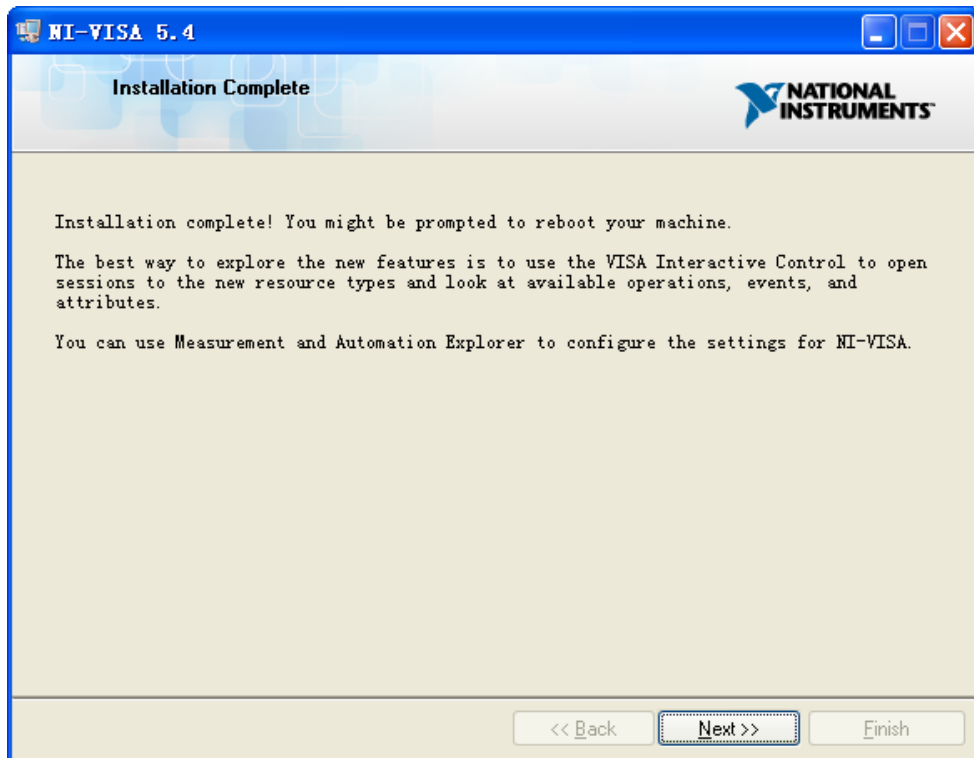
- d. Set the install path, default path is “C:\Program Files\National Instruments\”, you can change it. Click Next, dialog as shown above.



- e. Click Next twice, in the License Agreement dialog, select the “I accept the above 2 License Agreement(s).”, and click Next, dialog as shown below:



- f. Click Next to begin installation.

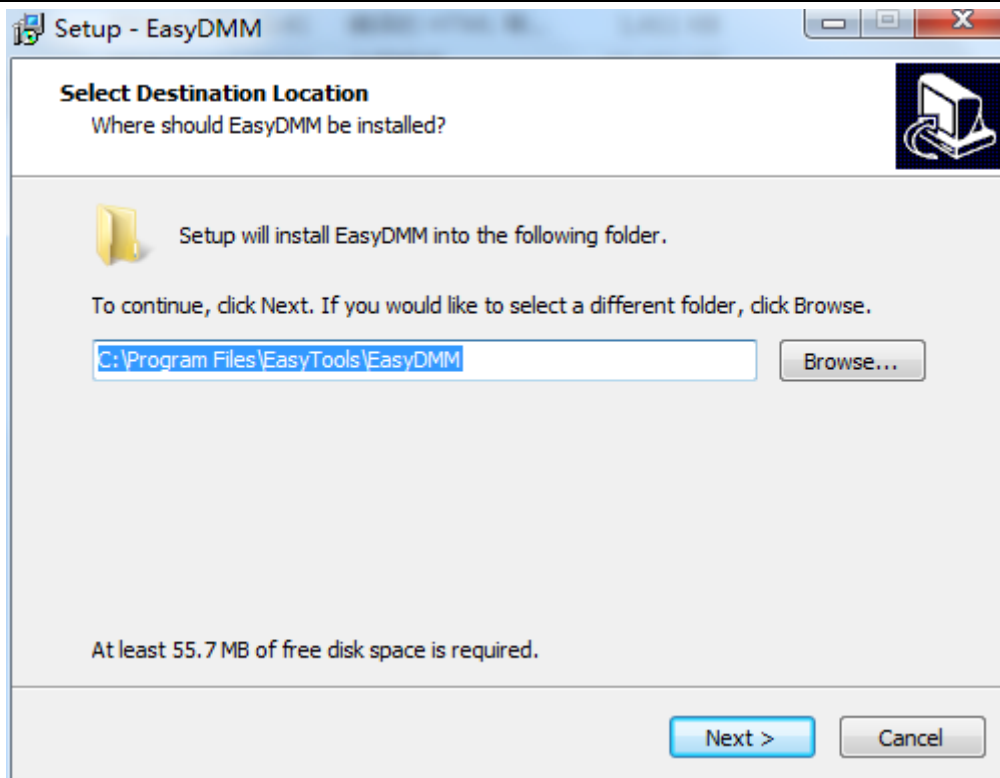


- g. Now the installation is complete, reboot your PC.

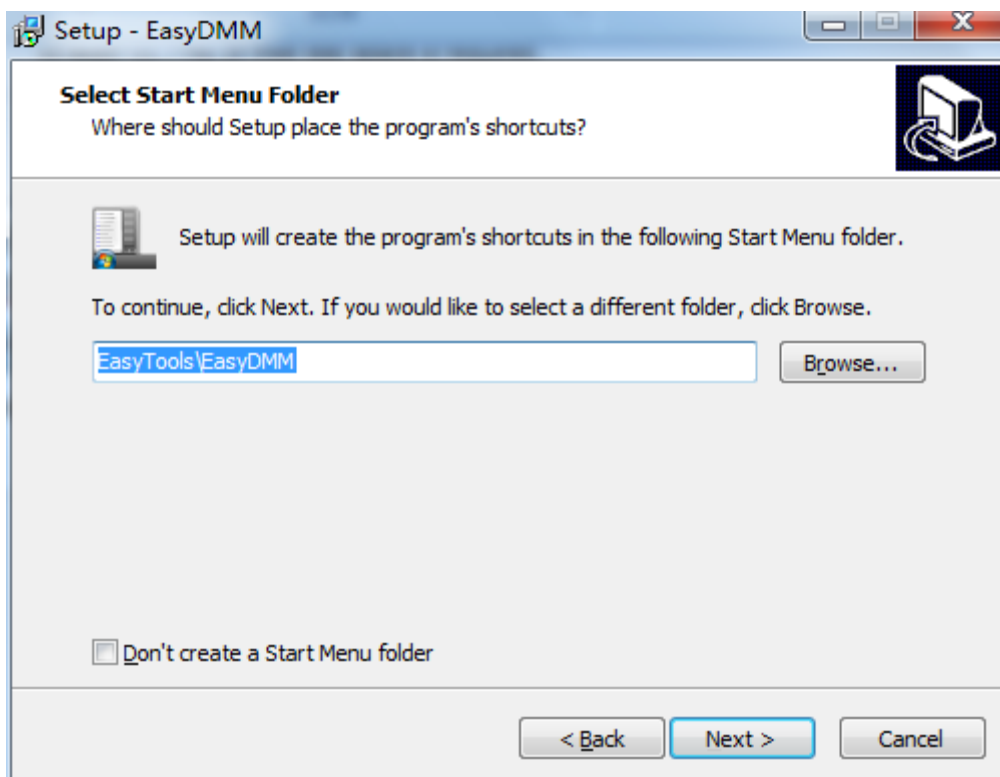
If you don't want to install the tools in NI-VISA, you can install only the NI-VISA runtime engine, which is much smaller than the full version. For example, download [NI-VISA Run-Time Engine 5.4](#) to your PC and install it as default selection. Its installation process is similar to the full version.

2 EasyDMM Software Installation

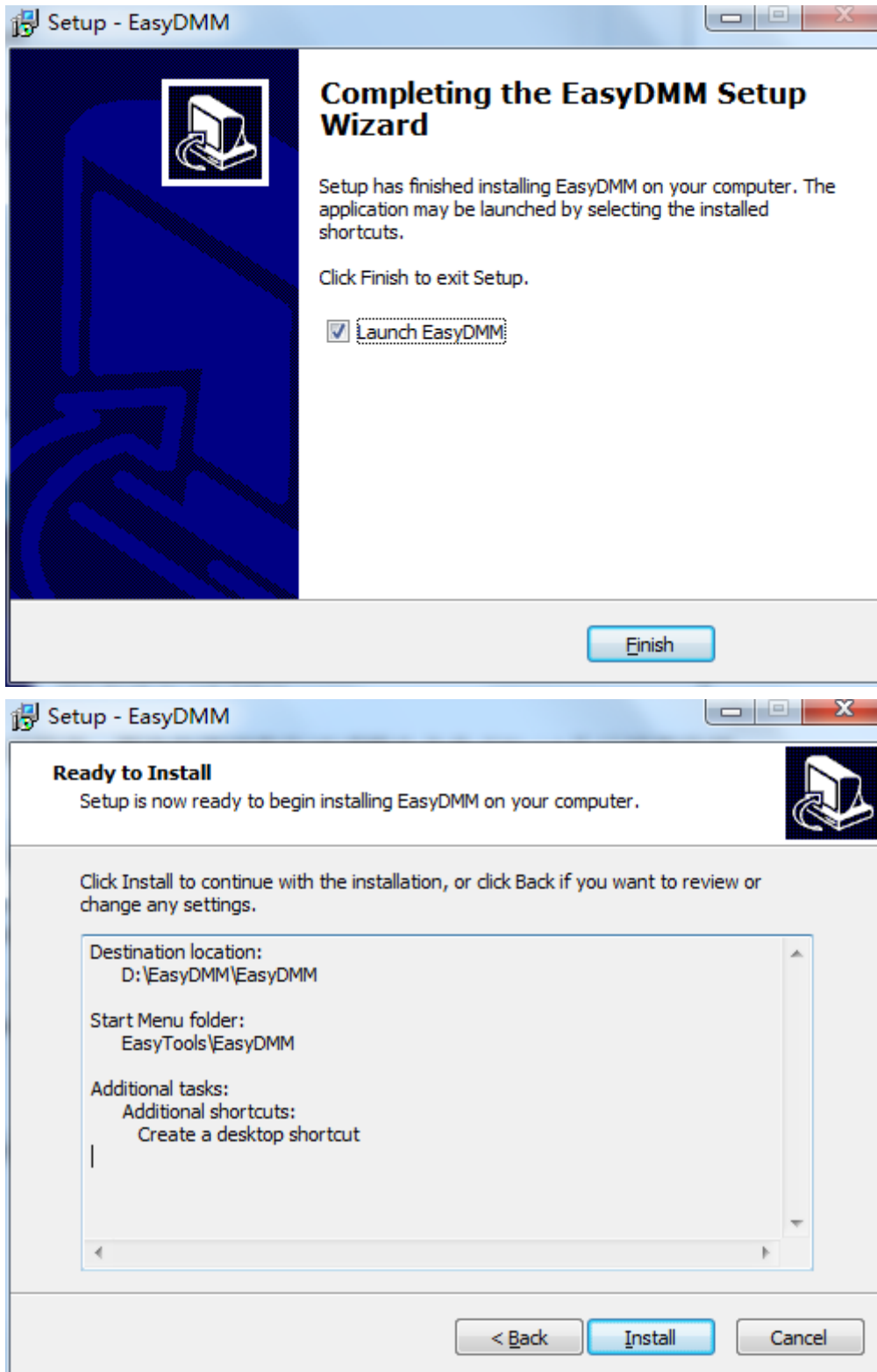
- a. Double click on the EasyDMM setup.exe file, launch the install process:
- b. Click next, dialog as shown below:



- c. Set the install path, default path is “C:\Program Files\EasyDMM\”, you can change it, click Next, dialog as shown below:



- d. Setup creates a shortcut in the following Start Menu folder. Click Next to choose default or Click Browse to select a different folder.



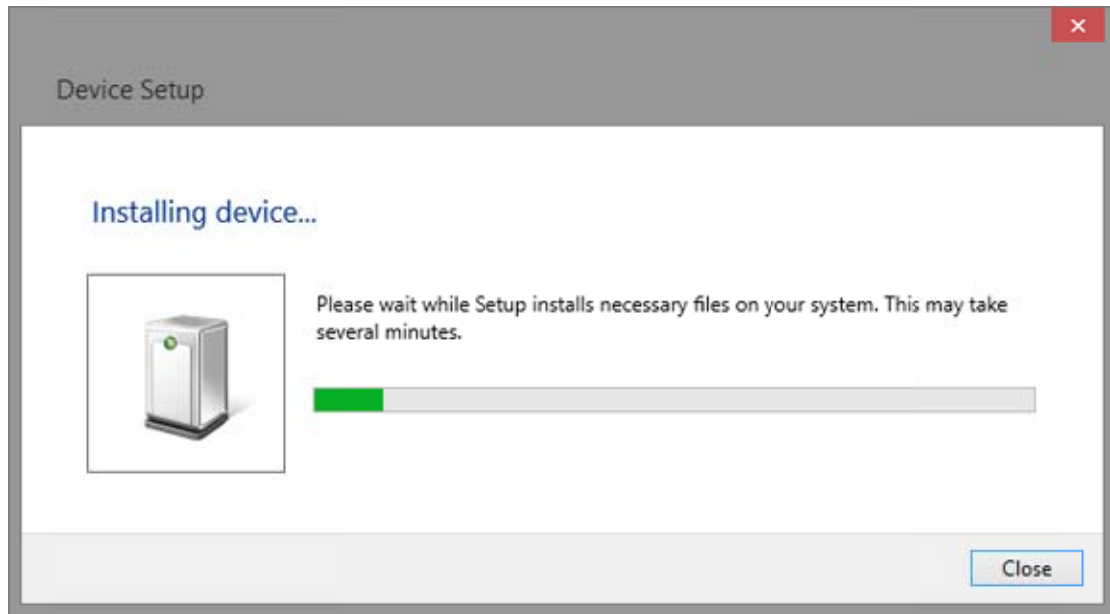
- e. Click Install .Now software setup is finished.

2.1 Connect the Instrument and PC

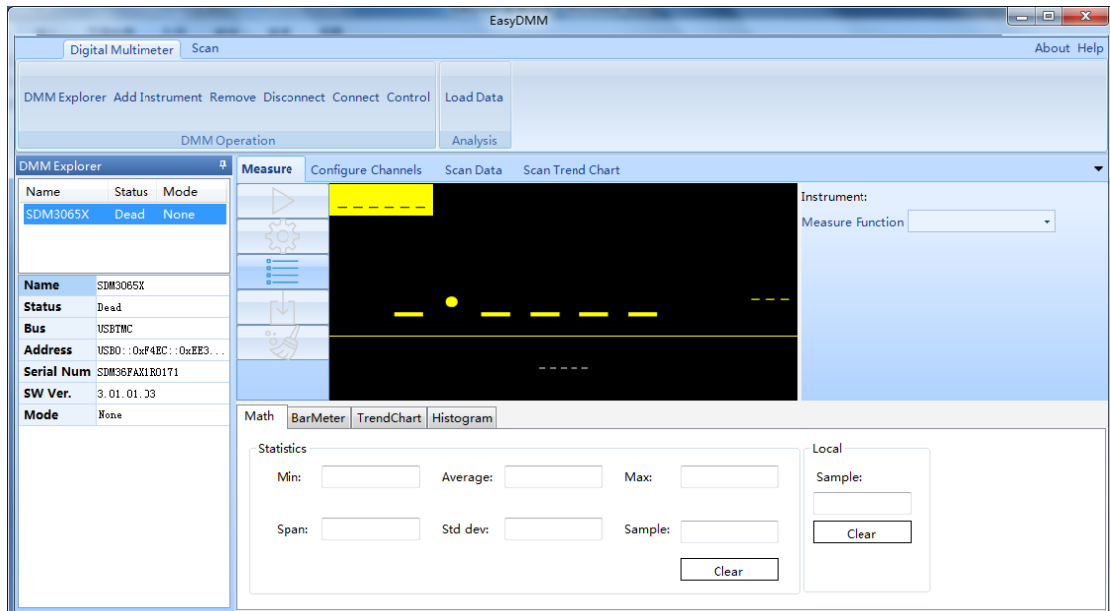
Your digital multi-meter can communicate with a PC through the USB or LAN interface. This manual takes the USB as an example. (For instructions to communicate with a PC

through the LAN interface see the User Manual.)

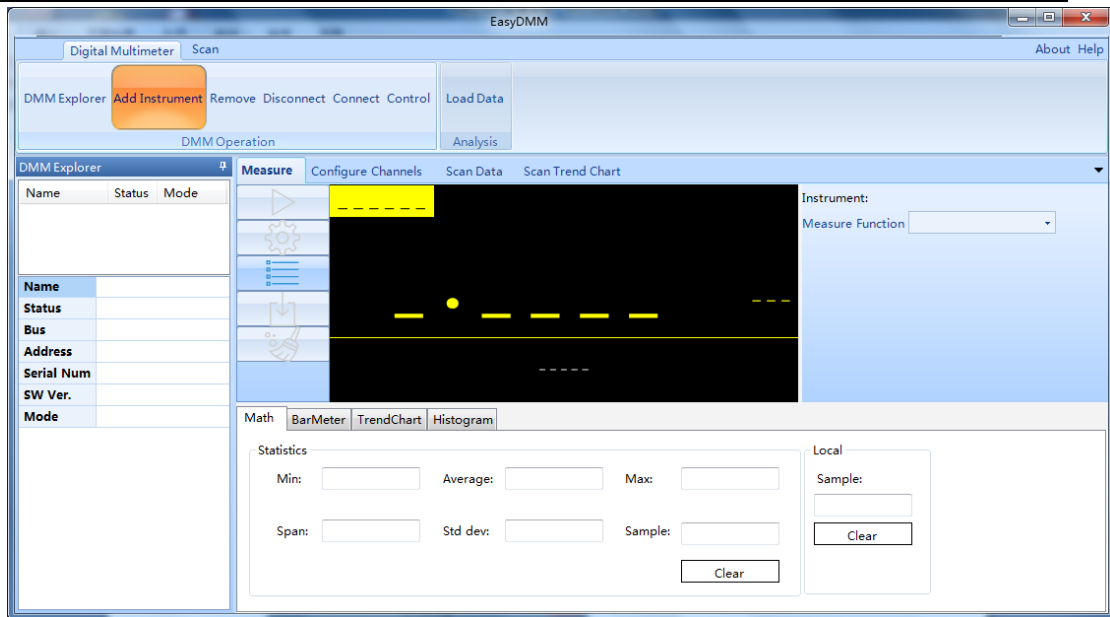
- a. Connect the USB Device interface at the rear panel of the digital multi-meter and the USB Host interface of the PC using a USB cable. Assuming your PC is already turned on, turn on your power supply and your PC will display the “Device Setup” screen as it automatically installs the device driver as shown below.



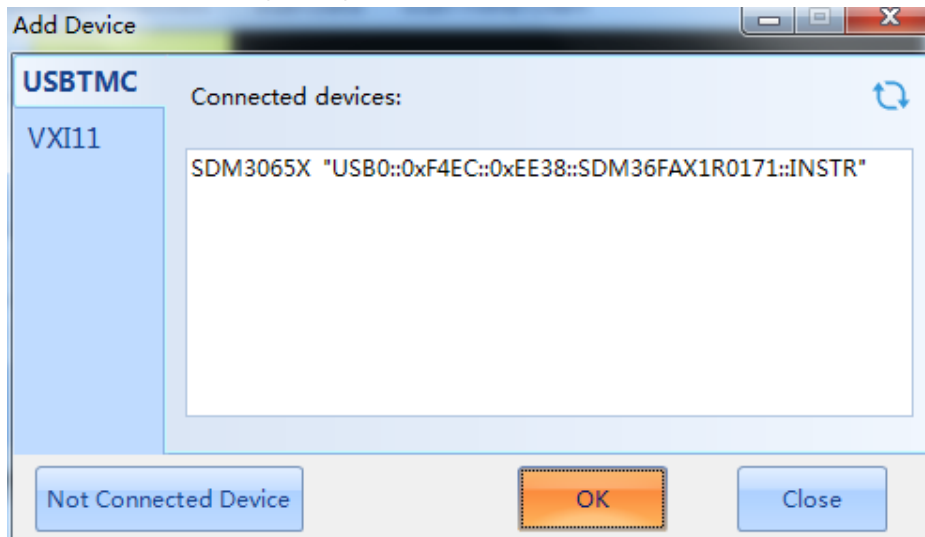
- b. Wait for the installation to complete and then proceed to the next step.
- c. Launch EasyDMM, the application as shown below.



- d. Click Add Instrument.



e. The Connect setting dialog as shown below. Choose USBTMC on the device:



f. Click OK, and you can communicate with the device in the application. Then click Control >> Screen Capture. The application is shown below:

